

Insulin delivery methods: Past, present and future

Rima B. Shah¹, Manhar Patel², David M. Maahs, Viral N. Shah

Barbara Davis Center for Diabetes, University of Colorado, Denver, ²Brain Research and Intervention Center, University of Illinois, Chicago, USA, ¹Department of Pharmacology, GMERS Medical College, Gandhinagar, Gujarat, India

Abstract

Many patients with advanced type 2 diabetes mellitus (T2DM) and all patients with T1DM require insulin to keep blood glucose levels in the target range. The most common route of insulin administration is subcutaneous insulin injections. There are many ways to deliver insulin subcutaneously such as vials and syringes, insulin pens, and insulin pumps. Though subcutaneous insulin delivery is the standard route of insulin administration, it is associated with injection pain, needle phobia, lipodystrophy, noncompliance and peripheral hyperinsulinemia. Therefore, the need exists for delivering insulin in a minimally invasive or noninvasive and in most physiological way. Inhaled insulin was the first approved noninvasive and alternative way to deliver insulin, but it has been withdrawn from the market. Technologies are being explored to make the noninvasive delivery of insulin possible. Some of the routes of insulin administration that are under investigation are oral, buccal, nasal, peritoneal and transdermal. This review article focuses on the past, present and future of various insulin delivery techniques. This article has focused on different possible routes of insulin administration with its advantages and limitation and possible scope for the new drug development.

Key words: Diabetes mellitus, inhaled insulin, insulin delivery, oral insulin, technology, closed-loop system, artificial pancreas

INTRODUCTION

The prevalence of diabetes is increasing throughout the world. The International Diabetes Federation estimated 366 million people had diabetes in 2011 and is expected rise to 552 million by 2030.^[1] Though type 2 diabetes mellitus (T2DM) accounts for 85-95% of diabetes, the prevalence of T1DM has increased by 2-3% in certain parts of Europe and USA.^[1,2] Thus, diabetes has become one of the most common noncommunicable diseases worldwide.

Discovery of insulin was one of the greatest medical discoveries of the last century. All patients with T1DM and many patients

with long standing T2DM require insulin therapy to achieve good glycemic control.^[3,4,5] The early insulins were derived from bovine and porcine pancreas and were associated with immunological reactions, lipodystrophy and unpredictable insulin absorption from subcutaneous tissue. Hence, initial research focused on the purification of insulin.^[4] There has been marked progression in the development of insulins such as rapid and long acting insulin analogs in the last five decades.^[4]

The landmark Diabetes Control and Complication Trial (DCCT), demonstrated the importance of intensive insulin therapy (IIT) in T1DM for prevention of micro- and macrovascular complications.^[5] However, IIT results in increased risk for hypoglycemia, which is a major obstacle in achieving glycemic targets.^[6,7] Therefore, emphasis has evolved to achieving tight glycemic control with minimal hypoglycemia by focusing on delivering insulin that mimics endogenous insulin secretion by the pancreas.^[4]

Insulin is a peptide hormone, therefore, destroyed by gastric acid if taken orally. Intradermal absorption of insulin is not reliable, and it cannot mimic physiological insulin secretion. In addition, intradermal, intramuscular and intravenous therapy is not suitable for self-administration daily. Subcutaneous route of administration is widely preferred method for administration of insulin because of the ease of self-administration. It has limitations like pain at injection site, lipodystrophy, noncompliance by the patient, etc.^[4] The newer methods of insulin delivery aim to deliver insulin with minimal invasiveness in an accurate and

Address for correspondence:

Viral Shah, MD,
Barbara Davis Center for Diabetes, 1775 Aurora Ct,
MS A140, Colorado, USA.
E-mail: viral.shah@ucdenver.edu
Dr. Rima B. Shah,
Department of Pharmacology, GMERS Medical College,
Gnadhinar - 382 012, Gujarat, India.
E-mail: dr.rimashah@gmail.com

Access this article online

Quick Response Code: 	Website: www.jpionline.org
	DOI: 10.4103/2230-973X.176456

precise manner and to reduce patient burden. This review article focuses on the development of the past and present methods to deliver insulin with a perspective on anticipated developments.

INSULIN DELIVERY METHODS-FROM PAST TO PRESENT

Insulin can be administered subcutaneously via various methods such as vial and syringe, insulin pen and continuous subcutaneous insulin infusion (CSII) [Figure 1]. The advantages and disadvantages of each subcutaneous insulin delivery system are reviewed here and summarized in Table 1.

Vial and syringe

The word syringe came from the Greek “syrinx,” which means “tube.” The development of syringes dates back to 1853.^[8] One of the earliest syringes was the Fergusson syringe that paved the way for the development of the modern syringes.^[8] The intravenous route was the first parenteral route for drug delivery reported through syringes and needles in the late 17th century, and the subcutaneous route of drug delivery was established in the early 19th century. In 1924, 2 years after the discovery of insulin, Becton, Dickinson and Company (BD) made a syringe specifically designed for the insulin injection.^[9] Initial syringes were made of metals and/or glass, were reusable and required boiling after each use to sterilize. To reduce the incidence of needle associated infections, disposable syringes were developed. BD mass produced the first glass disposable syringes in 1954, called the BD Hypak.^[10] A number of

modifications have been made to the modern insulin syringes and needles over the last five decades.^[8-10] Despite all these advances, many patients do not feel to inject insulin 3-4 times a day as a result of needle phobia. Recently, an injection port has been designed know as i-port Advance[®]. It is the first device to combine an injection port and an inserter in one complete set that eliminates the need for multiple injections without having to puncture the skin for each dose. This device is helpful for the insulin requiring patients having needle phobia and helps them to achieve glycemic control effectively.^[11]

Insulin pen

Insulin injections using vial and syringe are limited by inconvenience and inaccuracy in preparing the insulin dose.^[12] These issues led to the development of insulin pens. The first insulin pen was manufactured by NovoNordisk in 1985.^[13] This was followed by refinements by various pharmaceutical companies over the past 30 years. The newer insulin pens are reusable, more accurate and equipped with safety features such as audible clicks with each dose to improve accuracy and reduce the chances of human errors.^[12,14] Another advancement in the pen device (HumaPen[®] Memoir[™]) is built-in recording of the time and date of the last 16 injections.^[15] Recently, NovoPen Echo[®] has been designed to give children and parents increased confidence, combines dosing in half-unit increments with a simple, easy-to-use, memory function.^[16] As such insulin pens are more accurate, convenient, less painful and patient friendly but associated with higher cost in comparison with vial and syringe.^[12,14,17-20] The use of insulin pen devices varies widely between countries with higher use in Europe (about 80%) and less in the USA (about 15%)^[21] as result of reimbursement issues, patient and physician related factors.^[21,22]

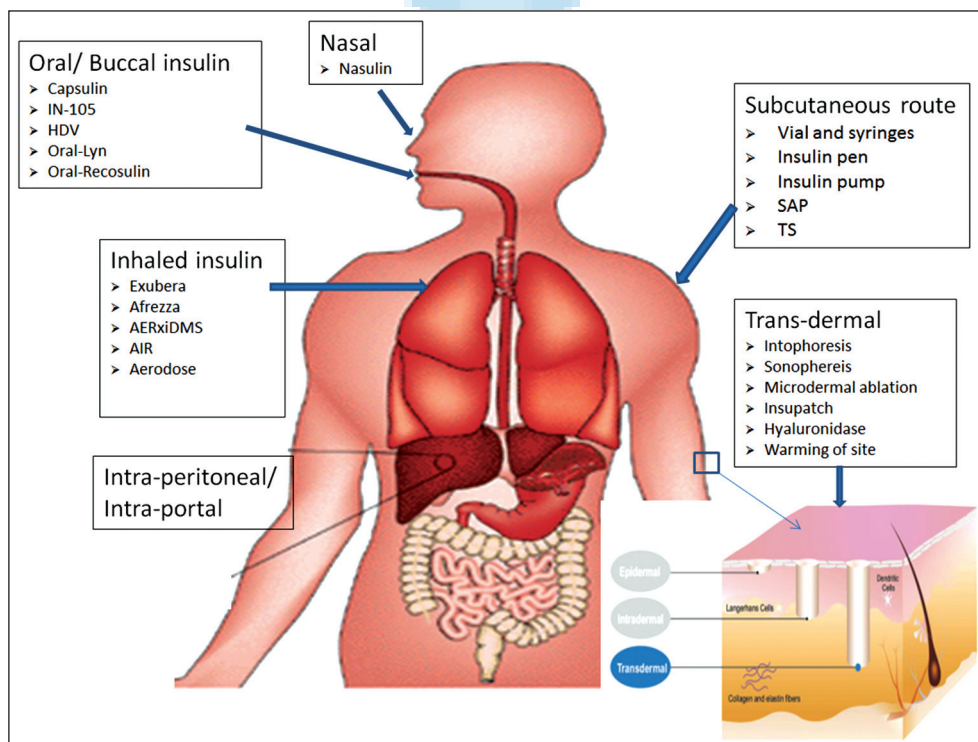


Figure 1: Various routes for insulin administration

Table 1: The advantages and disadvantages of insulin delivery methods

Methods	Advantages	Disadvantages	Remarks
Insulin delivery through subcutaneous route			
Vial and syringe	<ul style="list-style-type: none"> <input type="checkbox"/> Expensive versus pen and CSII 	<ul style="list-style-type: none"> <input type="checkbox"/> Pain versus pens Psychosocial issues Inconvenience to carrying it <input type="checkbox"/> Accurate versus pens <input type="checkbox"/> Patient friendly 	Most frequently used method
Pen device	<ul style="list-style-type: none"> Convenient <input type="checkbox"/> Pain versus syringes More accurate, precise versus syringes Easier to use 	<ul style="list-style-type: none"> More expensive versus syringes Can't mix two insulins 	No superiority of pen devices versus syringes for glycemic control
CSII (Accu-Chek® Spirit, OneTouch Ping MiniMed Paradigm, DANA Diabecare IIS, OmniPod, Nipro Amigo, T-slim)	<ul style="list-style-type: none"> Continuous delivery of insulin Better glycemic control <input type="checkbox"/> Patient compliance and acceptance 	<ul style="list-style-type: none"> <input type="checkbox"/> Cost <input type="checkbox"/> Risk of DKA if pump fails injection site infection 	Successful CSII needs patients education and requires motivation
SAP (any of the above pumps+Dexcom G4, Minimed, FreeStyle Navigator)	<ul style="list-style-type: none"> Same as CSII+better glycemic control <input type="checkbox"/> Hypoglycemia 	<ul style="list-style-type: none"> Same as CSII CGM accuracy 	Better glycemic control requires contentions CGM use
TS (Paradigm Revel 2.0 insulin pump and Enlite glucose sensor)	<ul style="list-style-type: none"> All the advantage of SAP+reduce hypoglycemia by 30% versus CSII 	<ul style="list-style-type: none"> Same as CSII and SAP Hypoglycemia algorithms not predictive 	Approved recently by FDA Phase 4 survey underway
Intra-peritoneal (MIP 2007)	<ul style="list-style-type: none"> Direct insulin delivery to the portal vein More physiological 	<ul style="list-style-type: none"> Invasive <input type="checkbox"/> Cost Infection, portal vein thrombosis risk 	Long-term data not available
Inhaled (Exubera, Technosphere, AERx, insulin Diabetes Management System)	<ul style="list-style-type: none"> Noninvasive <input type="checkbox"/> Patient compliance Rapid onset of action (10-15 min) Better PPBG control 	<ul style="list-style-type: none"> <input type="checkbox"/> Bioavailability Inhalational devices issues <input type="checkbox"/> Lung function Transient cough 	Exubera withdrawn from the market Technosphere under FDA review
Oral (Capsulin, ORMD-0801, IN-105)	<ul style="list-style-type: none"> <input type="checkbox"/> Portal insulin concentration Noninvasive Patient friendly 	<ul style="list-style-type: none"> GI degradation of insulin <input type="checkbox"/> Bioavailability 	Result of phase 3 trial awaited-IN-105
Buccal (Oral-Lyn, Recosulin)	<ul style="list-style-type: none"> Same as oral+bypass GI degradation 	<ul style="list-style-type: none"> <input type="checkbox"/> Bioavailability 	Phase 3 trial result awaited
Nasal (Nasulin)	<ul style="list-style-type: none"> Same as oral and buccal insulin+no interference with pulmonary functions Needle free 	<ul style="list-style-type: none"> <input type="checkbox"/> Bioavailability (15-25%) Local irritation Nasal irritation 	Phase 2 and 3 clinical trials awaited
Transdermal (Microneedles, iontophoresis, electrophoresis, sonophoresis microdermalabration)	<ul style="list-style-type: none"> Needle free 	<ul style="list-style-type: none"> Skin irritation, blister, pain and redness 	No long-term trials Safety not established

↑: High, ↓: Less, +: Plus, DKA: Diabetic ketoacidosis, FDA: Food and Drug Administration, CSII: Continuous subcutaneous insulin infusion, TS: Threshold suspend insulin pump, SAP: Sensor-augmented pump therapy, GI: Gastro-intestinal, CGM: Continuous glucose monitor, PPBG: Postprandial blood glucose

Recently developed pen needles are shorter and thinner (31-32 G × 4-5 mm), less painful and requires less thumb force and time to inject insulin resulting in improved patient satisfaction.^[23-25]

The newer smart pens are designed to guide the individual with insulin requiring diabetes about the insulin dosage (by means of in-built calculators), memory functions to remember the amount and time of insulin dosage and automatic transmission of insulin dose to the mobile logbook through Bluetooth technologies.

Continuous subcutaneous insulin infusion

More physiologic delivery of insulin has been a long-standing goal. In normal physiology, a continuous small amount of insulin secretion from the beta cells of the pancreas reduces hepatic glucose output, and a larger amount of insulin is secreted when food is ingested to maintain euglycemia.^[26] Although multiple daily injections (MDI) therapy can effectively

achieve hemoglobin A1c (A1c) goals, it does not resemble the insulin secretion from pancreatic beta cells. Hence, it is associated with high glycemic variability (i.e., hypoglycemia and hyperglycemia).

The first portable insulin pump was invented by Kadish in 1963; however, it was limited by its size and technical issues.^[27] Since then, modifications have been made to make it more efficient and comfortable to the patient. The first commercial insulin pump was introduced in 1979 in the USA.^[14] The DCCT trial used CSII therapy in nearly 40% of the intensive arm.^[5,28] The current generation of insulin pumps are more patient friendly as a result of smaller size and smart features such as built-in-dose calculators and alarms.^[29]

Clinical trials have demonstrated the effectiveness of CSII over MDI therapy in achieving glycemic goals (~0.5% A1c reduction), reduction in insulin dosage (~14%), reduction of hypoglycemia

and glycemic variability and improved patient satisfaction and quality of life.^[30-33] Limitations of CSII therapy include: Higher cost compared with MDI, increased risk for subcutaneous infections, inconvenience of being attached to a device, and a theoretical higher risk for diabetic ketoacidosis.^[34] Patient education before starting CSII therapy is of utmost important to avoid these complications.^[34]

Sensor-augmented pump therapy

With the improvements in continuous glucose monitors (CGM), it has become feasible to combine two technologies (pump and CGM) in the management of diabetes. The new generations of CGMs are more accurate, smaller in size and shown to improve glycemic control in patients with T1DM.^[34-36] When CGM readings are used to adjust insulin delivery through insulin pump, it is known as sensor-augmented pump (SAP) therapy. The use of SAP reduces A1c by 0.7-0.8% compared to baseline or MDI therapy in patients with T1DM.^[37,38] SAP requires patient involvement for using CGM glucose readings to adjust insulin pump delivery. This makes SAP susceptible to human errors. In addition, SAP therapy requires patients to wake up to manage nocturnal hypoglycemia.

Sensor-augmented pump with low glucose suspend or threshold suspend pump

Hypoglycemia is the most feared acute complication of insulin therapy in patients with T1DM. More than half of hypoglycemia occurs during the night and although rare, 6% of deaths are due to nocturnal hypoglycemia in younger individuals with T1DM.^[39,40] In addition, the MDI, CSII and SAP are not able to eliminate nocturnal hypoglycemia. Therefore, the first step in making an artificial pancreas (closed-loop system) is to suspend insulin delivery once CGM glucose is at a low threshold (often 70 or 60 mg/dl) to reduce nocturnal hypoglycemia.

The threshold suspends (TS) system suspends the delivery of insulin for up to 2 h if a patient does not take action with a low glucose alarm. This feature is designed to reduce the severity and duration of hypoglycemia, although it will not prevent hypoglycemia.^[41] 2 h of insulin suspension is not associated with severe hyperglycemia and/or diabetic ketoacidosis^[42] or more likelihood of ketone.^[43] In clinical trials, TS reduced the severity of nocturnal hypoglycemia by 30-40% and reduced the duration of severe hypoglycemia without altering A1c values.^[44,45] Recently, the TS system has been approved by US Food and Drug Administration (FDA) after having been approved in 2009 in other countries.^[46]

Future steps in the evolution of the artificial pancreas will be^[47]:

- (1) Use of predictive algorithms to minimize hypoglycemia even before hypoglycemia occurs.
- (2) Use of algorithms to keep blood sugar in target range (hypoglycemia/hyperglycemia minimizer).
- (3) Automated basal and/or hybrid close-loop and
- (4) Fully automated the single (insulin) or
- (5) Dual (insulin + glucagon) hormonal close-loop.

NOVEL APPROACHES TO DELIVER INSULIN

The subcutaneous route of insulin administration is associated with many drawbacks such as injection pain, inconvenience, variable compliance and difficulty in achieving postprandial blood glucose control.^[48] In addition, subcutaneous insulin administration results in peripheral hyperinsulinemia in contrast to physiologic delivery to the portal vein.^[48] Therefore, there is interest in delivering insulin by alternate noninvasive routes. Currently, the pulmonary route of administration is approved and discussed as well as other routes under investigation.

INHALED INSULIN

Insulin delivery to the lungs was the first reported alternate to subcutaneous injection. It has long been appreciated that insulin delivery by aerosol reduces blood glucose.^[49] Early studies showed that delivering bovine or porcine insulin using a nebulizer produced a prompt hypoglycemia in subjects with and without diabetes.^[50,51]

Advantages of the pulmonary route include a vast and well perfused absorptive surface, absence of certain peptidases that are present in the gastrointestinal (GI) tract that breaks down insulin, and the ability to bypass the “first pass metabolism.”^[52] However, the exact mechanism of insulin absorption across the pulmonary epithelium remains unclear, but it is believed to involve transcytotic and paracellular mechanisms.^[49]

The first inhaled product, Exubera[®] was approved by the US FDA in year 2006.^[53] Exubera[®] was a dry power formulation available as 1 mg and 3 mg doses to be taken with the help of an Inhance[™] inhaler device.^[53] Exubera[®] was found to have pharmacokinetic and pharmacodynamic (PK/PD) properties similar to insulin aspart with a faster onset of action (10-15 min).^[54] In clinical trials in patients with uncontrolled T1DM and T2DM, Exubera[®] was found to reduce postprandial blood glucose and A1c significantly.^[55] However, Exubera[®] was contraindicated in smokers as it increased the risk of hypoglycemia due to greater absorption compared to nonsmokers.^[56] In addition, patients were required to undergo pulmonary function tests before treatment initiation, after 6 months and annually thereafter.^[53,56] This product did not do well commercially despite the noninvasive route possibly due to higher cost, the bulky delivery device, concerns related to declining in pulmonary function, and less preference by the patients and physicians. This product was withdrawn from the market by Pfizer in 2007.

Another promising inhaled insulin is Afrezza (Sanofi and MannKind) based on Technosphere[®] dry powdered formulation. The onset of action of Afrezza inhaled insulin is 15 min and duration is 2-3 h, which is ideal for postprandial blood glucose control.^[57] Transient nonproductive cough and a modest reduction in lung function initially are the common side-effects.^[57,58] Recently, MannKind completed two large phase 3 clinical trials with the use

of this device in patients with T1DM and T2DM (NCT01445951/ NCT01451398) and a clinical trial is under investigation in patients with already compromised pulmonary function (NCT01021891). This device is in the FDA approval process.

The AERx insulin Diabetes Management System, Aerodose, ProMaxx (protein matrix microsphere) and advance inhalational research are newer inhalational devices being investigated in clinical trials.^[59] Recently, Sanofi has launched Afrezza in the United States market for diabetes management in patients with T1DM. Although, the pulmonary route of insulin administration is noninvasive, it is limited by technical issues associated with inhaler devices, higher cost and long-term safety especially pulmonary function.

ORAL INSULIN

The oral route of insulin administration may be the most patient-friendly way of taking insulin and it could more closely mimic physiological insulin delivery (more portal insulin concentration than peripheral).^[60] However, the challenges in making oral insulin include: Inactivation by proteolytic enzymes in the GI tract and low permeability through the intestinal membrane due to larger size and hydrophobicity of insulin resulting in poor bioavailability. Several pharmaceutical companies are engaged in developing carriers to protect insulin from GI degradation and facilitate intestinal transport of insulin to deliver insulin to the circulation with sufficient bioavailability.^[61-66]

Natural and synthetic nanoparticles have been used as a carrier or vehicle for insulin such as chitosan, liposomes, polymeric nanovesicles, polylactides, poly- ϵ , poly-alkyl cyanoacrylate and various polymeric hydrogels, although further discussion of these carriers or vehicles is beyond the scope of this review.^[61-66]

Certain oral insulin preparations such as Capsulin, ORMD-0801, IN-105, oral hepatic directed vesicles and Eligen completed phase 1 and phase 2 trials with promising results.^[48,56,67]

Recently, multifunctional polymers and self nanoemulsifying drug delivery system (SNEDDS) has been tried for oral insulin by Sakloetsakun *et al.*^[68] This SNEDDS was based on thiolated chitosan. The formulations in the presence or absence of insulin (5 mg/mL) were spherical with the size range between 80 and 160 nm. Entrapment efficiency of insulin increased significantly when the thiolated chitosan was employed ($95.14\% \pm 2.96\%$), in comparison to the insulin SNEDDS ($80.38\% \pm 1.22\%$). After 30 min, the *in vitro* release profile of insulin from the nanoemulsions was markedly increased compared with the control. *In vivo* results showed that insulin/thiolated chitosan SNEDDS displayed a significant increase in serum insulin ($P = 0.02$) compared to oral insulin solution. A new strategy to combine SNEDDS and thiolated chitosan described in this study could therefore be a promising and innovative approach to improve oral bioavailability of insulin.^[68]

COLONIC INSULIN DELIVERY

Oral colon delivery is currently considered of importance not only for the treatment of local pathologies, such as primarily inflammatory bowel disease, but also as a means of accomplishing systemic therapeutic goals. Large intestine is ideally not suited for absorption processes for drugs but it has certain advantages over small intestine like, long transit time, lower levels of peptidases (prevent destruction of peptides) and higher responsiveness to permeation enhancers. Accordingly, it has been under extensive investigation as a possible strategy to improve the oral bioavailability of peptide and protein drugs. Oral delivery systems intended for colonic release of insulin were devised according to microflora-, pH- and time-dependent strategies were well described in a review by Maroni *et al.*^[69] Bioavailability and pharmacological availability data are generally still far from being reliable in terms of magnitude, onset, duration and above all, consistency for this route of administration and it is under investigation.

Despite the enthusiasm and progress in making oral insulin, there is still a long way to go before these products will be available in the market.

NASAL INSULIN

In theory, intranasal delivery has several advantages over oral (bypass GI peptidases), subcutaneous (noninvasive and painless) and inhalation route (no issue with lung function) which makes this route attractive for the delivery of insulin.^[70] However, intranasal delivery has shortcomings such as limited permeability of a large molecule through the nasal mucosa and rapid mucociliary clearance resulting in variable absorption.^[70]

Historically, intranasal delivery with early porcine and bovine insulins was investigated in patients with T1DM.^[71,72] Currently, two technologies are under investigation: Nasulin™ (CPEX pharmaceuticals) and nasal insulin by Nastech Pharmaceutical Company Inc. Both insulin preparations have bioavailability of about 15-25% with the onset of action ~ 10 -20 min.^[73,74] Results from the phase 2 and 3 clinical trials are awaited. The substances such as bile salt, surfactant and fatty acid derivatives are being investigated to enhance mucosal permeability of insulin but they increase the risks for local irritation, nasal secretion, sneezing or burning sensation.^[74,75]

Nasal insulin crosses the blood brain barrier hence it has a hypothesized effect on memory function.^[76] In a randomized placebo controlled trial with 104 adults with amnesic mild cognitive impairment or mild to moderate Alzheimer's disease were randomized to receive either placebo or 20 IU or 40 of intranasal insulin. Treatment with intranasal insulin improved memory, preserved caregiver-rated functional ability and preserved general cognition without any significant hypoglycemic event. These improvements in cognitive functions were correlated with

changes in the A β 42 level and in the tau protein-to-A β 42 ratio in cerebrospinal fluid.^[77] Based on this, large randomized controlled trials (NCT01595646, NCT01767909) are ongoing to evaluate the usefulness of this agent for the treatment of Alzheimer's disease.

BUCCAL INSULIN

Buccal delivery of insulin has similar benefits as oral insulin with the advantage of bypassing GI degradation. Furthermore, the relatively large surface area results in better bioavailability.^[78] Initially, Genex Biotechnology developed Oral-lyn™ which is a liquid formulation of short acting insulin that is administered using Genex's metered dosage aerosol applicator (RapidMist™). The Eli-Lilly and Genex conducted phase 1 and phase 2 trials in patients with T1DM and T2DM with promising results.^[78,79] However, in 2004 both companies dissolved their development agreements.^[80] The phase 2 clinical trial is on-going on and further information is awaited (NCT00948493 and NCT00668850). Another molecule being developed by Shreya Life Sciences Pvt. Ltd., India is oral Recosulin® and the results of the phase 2 and phase 3 trials are awaited.^[81,82]

Another method for delivery of insulin is fast dissolving films as an alternative to the oral tablets for rapid drug delivery.^[83] The Monosol Rx (Pharm Film Drug delivery technology) in collaboration Midatech Company developed Midaform™ insulin, which is delivered by buccal route. No information is available on studies using this formulation. Another formulation "insulin loaded orally dissolved films" is undergoing PK/PD investigation (NCT01446120).

TRANSDERMAL

Trans-dermal insulin delivery eliminates the problems associated with needles and injections and large surface area of the skin makes it a convenient route for insulin delivery.^[84] However, the penetration of insulin is halted by the stratum corneum, the outer most layer of the skin. Numerous methods have been explored to overcome the barrier of stratum corneum.^[84]

There are several ways insulin can be delivered transdermally such as:

- Iontophoresis, the technique that uses small electric currents,^[85]
- Sonophoresis or phonophoresis uses ultrasound waves,^[86]
- Microdermal ablation by removing the stratum corneum,^[87]
- Electroporation utilizes high voltage pulses that are applied for a very short time,^[88]
- Transfersulin is the insulin encapsulated in transferosome, an elastic, flexible vesicle which squeeze by itself to deliver drugs through skin pores,^[89]
- Insupatch™, a device developed as an add-on to an insulin pump that applies local heat to the skin in order to increase the absorption of insulin,^[90,91] and

- Recombinant human hyaluronidase (rHuPH20) to increase insulin absorption from subcutaneous tissue.^[92]

Additionally, microneedles with 1 μ m diameter and of various lengths can deliver insulin in effective, accurate and precise manner.^[93] Microneedle technology also can be combined as a transdermal patch.

The transdermal insulin delivery techniques are limited by skin injury, burn or blister formation and rarely significant pain and discomfort. These technologies are still evolving and their long-term utility, safety and usefulness are not known at present.

INTRA-PERITONEAL (INTRA-PORTAL)

As discussed, the intravenous and subcutaneous route of insulin delivery are associated with peripheral hyperinsulinemia and considered nonphysiological. Direct delivery of insulin in the portal vein mimics the high portal insulin concentration. This route of insulin delivery has been investigated since the 1970s.^[94] The pump (The MIP 2007C Medtronic/Minimed, Northridge, CA, USA) is implanted beneath the subcutaneous tissue in the lower abdomen under general anesthesia. From this subcutaneous pocket, the peritoneum is opened, and the tip of the catheter is carefully inserted and directed towards the liver. After implantation, the pump reservoir is refilled in the outpatient clinic transcutaneously at least every 3 months, depending on the individual insulin requirement.^[95] Clinical trials have shown safety and efficacy of intraperitoneal insulin delivery.^[96,97] The limitations of this route of insulin administration include it is invasive, may be associated with subcutaneous infections, cannula blockage, higher cost, portal-vein thrombosis and peritoneal infection.^[98]

OTHER NONCONVENTIONAL ROUTES

Ocular route

Until date, no human trial has been reported with this route and an animal study failed to achieve significant plasma insulin concentration.^[99]

Rectal route

Rectal gels^[100] and suppositories^[101] showed fair results. However, this route is not commercially viable.

Intra-tracheal

Administration of insulin was reported in 1924^[102] but is not practical so not taken up for further development.

CONCLUSION

There is a long history of research focusing on identifying a route of administration for insulin that is minimally or noninvasive, effective, safe, convenient and cost-effective for patients. Each

route and delivery method has its own potential advantages and disadvantages. However, if successful, alternative routes of administration could revolutionize the treatment of diabetes mellitus and help improve patients' quality of life.

REFERENCES

1. The Global Burden. International Diabetes Federation. IDF Diabetes Atlas. 6th ed. Brussels, Belgium: International Diabetes Federation; 2013. Available from: <http://www.idf.org/diabetesatlas/5e/the-global-burden>. [Last accessed on 2013 Sep 16].
2. Garg SK, Michels AW, Shah VN. Use of non-insulin therapies for type 1 diabetes. *Diabetes Technol Ther* 2013;15:901-8.
3. U.K. prospective diabetes study 16. Overview of 6 years' therapy of type II diabetes: A progressive disease. U.K. Prospective Diabetes Study Group. *Diabetes* 1995;44:1249-58.
4. Shah VN, Moser EG, Blau A, Dhingra M, Garg SK. The future of basal insulin. *Diabetes Technol Ther* 2013;15:727-32.
5. The effect of intensive treatment of diabetes on the development and progression of long-term complications in insulin-dependent diabetes mellitus. The Diabetes Control and Complications Trial Research Group. *N Engl J Med* 1993;329:977-86.
6. Epidemiology of severe hypoglycemia in the diabetes control and complications trial. The DCCT Research Group. *Am J Med* 1991;90:450-9.
7. Seaquist ER, Anderson J, Childs B, Cryer P, Dagogo-Jack S, Fish L, *et al.* Hypoglycemia and diabetes: A report of a workgroup of the American Diabetes Association and the Endocrine Society. *J Clin Endocrinol Metab* 2013;98:1845-59.
8. The history of injecting and the development of the syringe. Exchange supply tools for harm reduction. Available from: http://www.exchangesupplies.org/article_history_of_injecting_and_development_of_the_syringe.php. [Last accessed on 2013 Sep 16].
9. Milestones BD. Available from: <http://www.bd.com/aboutbd/history/>. [Last accessed on 2013 Sep 16].
10. Fry A. Insulin delivery device technology 2012: Where are we after 90 years? *J Diabetes Sci Technol* 2012;6:947-53.
11. Burdick P, Cooper S, Horner B, Cobry E, McFann K, Chase HP. Use of a subcutaneous injection port to improve glycemic control in children with type 1 diabetes. *Pediatr Diabetes* 2009;10:116-9.
12. Selam JL. Evolution of diabetes insulin delivery devices. *J Diabetes Sci Technol* 2010;4:505-13.
13. Novo Nordisk Blue sheet. Quarterly perspective on diabetes and chronic diseases. 2010. Available from: http://www.press.novonordisk-us.com/bluesheet-issue2/downloads/NovoNordisk_Bluesheet_Newsletter.pdf. [Last accessed on 2014 Sep 13].
14. Penformis A, Personeni E, Borot S. Evolution of devices in diabetes management. *Diabetes Technol Ther* 2011;13 Suppl 1:S93-102.
15. Ignaut DA, Venekamp WJ. HumaPen Memoir: A novel insulin-injecting pen with a dose-memory feature. *Expert Rev Med Devices* 2007;4:793-802.
16. Reynolds C, Antal Z. Analysis of the NovoPen Echo for the delivery of insulin: A comparison of usability, functionality and preference among pediatric subjects and their parents, and health care professionals. *J Diabetes Sci Technol* 2010;4:1476-8.
17. Pfützner A, Bailey T, Campos C, Kahn D, Ambers E, Niemeier M, *et al.* Accuracy and preference assessment of prefilled insulin pen versus vial and syringe with diabetes patients, caregivers, and healthcare professionals. *Curr Med Res Opin* 2013;29: 475-81.
18. Xue L, Mikkelsen KH. Dose accuracy of a durable insulin pen with memory function, before and after simulated lifetime use and under stress conditions. *Expert Opin Drug Deliv* 2013;10:301-6.
19. Garg S, Bailey T, DeLuzio T, Pollom D. Preference for a new prefilled insulin pen compared with the original pen. *Curr Med Res Opin* 2011;27:2323-33.
20. Krzywon M, van der Burg T, Fuhr U, Schubert-Zsilavec M, Abdel-Tawab M. Study on the dosing accuracy of commonly used disposable insulin pens. *Diabetes Technol Ther* 2012;14:804-9.
21. Marcus A. Diabetes care — Insulin delivery in a changing world. *Medscape J Med* 2008 20;10:120.
22. Rubin RR, Peyrot M. Factors affecting use of insulin pens by patients with type 2 diabetes. *Diabetes Care* 2008;31:430-2.
23. Hirsch IB. Does size matter? Thoughts about insulin pen needles. *Diabetes Technol Ther* 2012;14:1081.
24. Aronson R, Gibney MA, Oza K, Bérubé J, Kassler-Taub K, Hirsch L. Insulin pen needles: Effects of extra-thin wall needle technology on preference, confidence, and other patient ratings. *Clin Ther* 2013;35:923-33.e4.
25. Kreugel G, Keers JC, Kerstens MN, Wolffenbuttel BH. Randomized trial on the influence of the length of two insulin pen needles on glycemic control and patient preference in obese patients with diabetes. *Diabetes Technol Ther* 2011;13:737-41.
26. Polonsky KS, Given BD, Hirsch L, Shapiro ET, Tillil H, Beebe C, *et al.* Quantitative study of insulin secretion and clearance in normal and obese subjects. *J Clin Invest* 1988;81:435-41.
27. Kadish AH. A servomechanism for blood sugar control. *Biomed Sci Instrum* 1963;1:171-6.
28. Maniatis AK, Klingensmith GJ, Slover RH, Mowry CJ, Chase HP. Continuous subcutaneous insulin infusion therapy for children and adolescents: An option for routine diabetes care. *Pediatrics* 2001;107:351-6.
29. Skyler JS, Ponder S, Kruger DF, Matheson D, Parkin CG. Is there a place for insulin pump therapy in your practice? *Clin Diabetes* 2007;25:50-6.
30. Retnakaran R, Hochman J, DeVries JH, Hanaire-Broutin H, Heine RJ, Melki V, *et al.* Continuous subcutaneous insulin infusion versus multiple daily injections: The impact of baseline A1c. *Diabetes Care* 2004;27:2590-6.
31. Pickup J, Mattock M, Kerry S. Glycaemic control with continuous subcutaneous insulin infusion compared with intensive insulin injections in patients with type 1 diabetes: Meta-analysis of randomised controlled trials. *BMJ* 2002;324:705.
32. Müller-Godeffroy E, Treichel S, Wagner VM, German Working Group for Paediatric Pump Therapy. Investigation of quality of life and family burden issues during insulin pump therapy in children with Type 1 diabetes mellitus — a large-scale multicentre pilot study. *Diabet Med* 2009;26:493-501.
33. Weissberg-Benchell J, Antisdell-Lomaglio J, Seshadri R. Insulin pump therapy: A meta-analysis. *Diabetes Care* 2003;26: 1079-87.
34. Moser EG, Morris AA, Garg SK. Emerging diabetes therapies and technologies. *Diabetes Res Clin Pract* 2012;97:16-26.
35. Garg SK, Voelmler MK, Beatson CR, Miller HA, Crew LB, Freson BJ, *et al.* Use of continuous glucose monitoring in subjects with type 1 diabetes on multiple daily injections versus continuous subcutaneous insulin infusion therapy: A prospective 6-month study. *Diabetes Care* 2011;34:574-9.
36. Garg SK. Role of continuous glucose monitoring in patients diabetes using multiple daily insulin injection. *Infusystems Int* 2009;8:18-21.
37. Cohen O, Körner A, Chlup R, Zoupas CS, Ragozin AK, Wudi K, *et al.* Improved glycemic control through continuous glucose sensor-augmented insulin pump therapy: Prospective results

- from a community and academic practice patient registry. *J Diabetes Sci Technol* 2009;3:804-11.
38. Bergenstal RM, Tamborlane WV, Ahmann A, Buse JB, Dailey G, Davis SN, *et al.* Effectiveness of sensor-augmented insulin-pump therapy in type 1 diabetes. *N Engl J Med* 2010;363:311-20.
 39. Sovik O, Thordarson H. Dead-in-bed syndrome in young diabetic patients. *Diabetes Care* 1999;22 Suppl 2:B40-2.
 40. Cryer PE. Severe hypoglycemia predicts mortality in diabetes. *Diabetes Care* 2012;35:1814-6.
 41. Brazg RL, Bailey TS, Garg S, Buckingham BA, Slover RH, Klonoff DC, *et al.* The ASPIRE study: Design and methods of an in-clinic crossover trial on the efficacy of automatic insulin pump suspension in exercise-induced hypoglycemia. *J Diabetes Sci Technol* 2011;5:1466-71.
 42. Garg S, Brazg RL, Bailey TS, Buckingham BA, Slover RH, Klonoff DC, *et al.* Reduction in duration of hypoglycemia by automatic suspension of insulin delivery: The in-clinic ASPIRE study. *Diabetes Technol Ther* 2012;14:205-9.
 43. Beck RW, Raghinaru D, Wadwa RP, Chase HP, Maahs DM, Buckingham BA, *et al.* Frequency of morning ketosis after overnight insulin suspension using an automated nocturnal predictive low glucose suspend system. *Diabetes Care* 2014;37:1224-9.
 44. Danne T, Kordonouri O, Holder M, Haberland H, Golembowski S, Remus K, *et al.* Prevention of hypoglycemia by using low glucose suspend function in sensor-augmented pump therapy. *Diabetes Technol Ther* 2011;13:1129-34.
 45. Bergenstal RM, Klonoff DC, Garg SK, Bode BW, Meredith M, Slover RH, *et al.* Threshold-based insulin-pump interruption for reduction of hypoglycemia. *N Engl J Med* 2013;369:224-32.
 46. Finn T. Medtronic Unveils FDA-Approved "Artificial Pancreas"-T1 Diabetes Patients Need to Take Note. *Healthcare Matters*. Oct 1, 2013. Available from: <http://www.healthcarematters.com/2013/10/medtronic-unveils-fda-approved-artificial-pancreas-t1-diabetes-patients-need-to-take-note/>. [Last accessed on 2013 Oct 27].
 47. Shah VN, Shoskes A, Tawfik B, Garg SK. Closed-loop system in the management of diabetes: Past, present, and future. *Diabetes Technol Ther* 2014;16:477-90.
 48. Soares S, Costa A, Sarmiento B. Novel non-invasive methods of insulin delivery. *Expert Opin Drug Deliv* 2012;9:1539-58.
 49. Gänsslen M. Über inhalation von insulin. *Klin Wochenschr* 1925;4:71.
 50. Wigley FW, Londono JH, Wood SH, Shipp JC, Waldman RH. Insulin across respiratory mucosae by aerosol delivery. *Diabetes* 1971;20:552-6.
 51. Elliott RB, Edgar BW, Pilcher CC, Quested C, McMaster J. Parenteral absorption of insulin from the lung in diabetic children. *Aust Paediatr J* 1987;23:293-7.
 52. Heinemann L. Alternative delivery routes: Inhaled insulin. *Diabetes Nutr Metab* 2002;15:417-22.
 53. FDA Approved Drug Products. Available from: <http://www.accessdata.fda.gov/scripts/cder/drugsatfda/index.cfm?fuseaction=SearchDrugDetails>. [Last accessed on 2013 Oct 27].
 54. Patton JS, Bukar JG, Eldon MA. Clinical pharmacokinetics and pharmacodynamics of inhaled insulin. *Clin Pharmacokinet* 2004;43:781-801.
 55. Alabraba V, Farnsworth A, Leigh R, Dodson P, Gough SC, Smyth T. Exubera inhaled insulin in patients with type 1 and type 2 diabetes: The first 12 months. *Diabetes Technol Ther* 2009;11:427-30.
 56. Flood T. Advances in insulin delivery systems and devices: Beyond the vial and syringe. *Insulin* 2006;1:99-108.
 57. Richardson PC, Boss AH. Technosphere insulin technology. *Diabetes Technol Ther* 2007;9 Suppl 1:S65-72.
 58. Neumiller JJ, Campbell RK, Wood LD. A review of inhaled technosphere insulin. *Ann Pharmacother* 2010;44:1231-9.
 59. Thippahawong J, Otulana B, Clauson P, Okikawa J, Farr SJ. Pulmonary insulin administration using the AERx insulin diabetes system. *Diabetes Technol Ther* 2002;4:499-504.
 60. Arbit E, Kidron M. Oral insulin: The rationale for this approach and current developments. *J Diabetes Sci Technol* 2009;3:562-7.
 61. Oral Delivery of Insulin: Novel Approaches. Available from: http://www.cdn.intechopen.com/pdfs/40267/InTech-Oral_delivery_of_insulin_novel_approaches.pdf. [Last accessed on 2013 Nov 10].
 62. Sonia TA, Sharma CP. An overview of natural polymers for oral insulin delivery. *Drug Discov Today* 2012;17:784-92.
 63. Ramesan RM, Sharma CP. Challenges and advances in nanoparticle-based oral insulin delivery. *Expert Rev Med Devices* 2009;6:665-76.
 64. Damgé C, Reis CP, Maincent P. Nanoparticle strategies for the oral delivery of insulin. *Expert Opin Drug Deliv* 2008;5:45-68.
 65. Chaturvedi K, Ganguly K, Nadagouda MN, Aminabhavi TM. Polymeric hydrogels for oral insulin delivery. *J Control Release* 2013;165:129-38.
 66. Geho WB, Geho HC, Lau JR, Gana TJ. Hepatic-directed vesicle insulin: A review of formulation development and preclinical evaluation. *J Diabetes Sci Technol* 2009;3:1451-9.
 67. Heinemann L. New ways of insulin delivery. *Int J Clin Pract Suppl* 2010;166:29-40.
 68. Sakloetsakun D, Dünnhaupt S, Barthelmes J, Perera G, Bernkop-Schnürch A. Combining two technologies: Multifunctional polymers and self-nanoemulsifying drug delivery system (SNEDDS) for oral insulin administration. *Int J Biol Macromol* 2013;61:363-72.
 69. Maroni A, Zema L, Del Curto MD, Foppoli A, Gazzaniga A. Oral colon delivery of insulin with the aid of functional adjuvants. *Adv Drug Deliv Rev* 2012;64:540-56.
 70. Yaturu S. Insulin therapies: Current and future trends at dawn. *World J Diabetes* 2013;4:1-7.
 71. Salzman R, Manson JE, Griffing GT, Kimmerle R, Ruderman N, McCall A, *et al.* Intranasal aerosolized insulin. Mixed-meal studies and long-term use in type I diabetes. *N Engl J Med* 1985;312:1078-84.
 72. Frauman AG, Cooper ME, Parsons BJ, Jerums G, Louis WJ. Long-term use of intranasal insulin in insulin-dependent diabetic patients. *Diabetes Care* 1987;10:573-8.
 73. Leary AC, Stote RM, Cussen K, O'Brien J, Leary WP, Buckley B. Pharmacokinetics and pharmacodynamics of intranasal insulin administered to patients with type 1 diabetes: A preliminary study. *Diabetes Technol Ther* 2006;8:81-8.
 74. Illum L. Nasal drug delivery — Recent developments and future prospects. *J Control Release* 2012;161:254-63.
 75. Stote R, Marbury T, Shi L, Miller M, Strange P. Comparison pharmacokinetics of two concentrations (0.7% and 1.0%) of Nasulin, an ultra-rapid-acting intranasal insulin formulation. *J Diabetes Sci Technol* 2010;4:603-9.
 76. Benedict C, Frey WH 2nd, Schiöth HB, Schultes B, Born J, Hallschmid M. Intranasal insulin as a therapeutic option in the treatment of cognitive impairments. *Exp Gerontol* 2011;46:112-5.
 77. Craft S, Baker LD, Montine TJ, Minoshima S, Watson GS, Claxton A, *et al.* Intranasal insulin therapy for Alzheimer disease

- and amnesic mild cognitive impairment: A pilot clinical trial. *Arch Neurol* 2012;69:29-38.
78. Heinemann L, Jacques Y. Oral insulin and buccal insulin: A critical reappraisal. *J Diabetes Sci Technol* 2009;3:568-84.
 79. Kumria R, Goomber G. Emerging trends in insulin delivery: Buccal route. *J Diabetol* 2011;2:1-9.
 80. Genex & Lilly dissolve Oralin Insulin Spray collaboration. Available from: <http://www.islet.org/forum029/messages/26908.htm>. [Last accessed on 2013 Nov 10].
 81. World's First Oral Insulin Spray Launched in India. *Asia Pacific Biotech News* 2008;12:60. Available from: <http://www.worldscientific.com/doi/abs/10.1142/S0219030308000918>. [Last accessed on 2013 Nov 10].
 82. Genex Provides Update on Genex Oral-ly Conference Call. PR News wire. WORCESTER, Mass. and TORONTO, Sept. 27, 2013. Available from: <http://www.prnewswire.com/news-releases/genex-provides-update-on-genex-oral-lyn-conference-call-225497092.html>. [Last accessed on 2013 Nov 10].
 83. Bala R, Pawar P, Khanna S, Arora S. Orally dissolving strips: A new approach to oral drug delivery system. *Int J Pharm Investig* 2013;3:67-76.
 84. Prausnitz MR, Langer R. Transdermal drug delivery. *Nat Biotechnol* 2008;26:1261-8.
 85. Kanikkannan N. Iontophoresis-based transdermal delivery systems. *BioDrugs* 2002;16:339-47.
 86. Rao R, Nanda S. Sonophoresis: Recent advancements and future trends. *J Pharm Pharmacol* 2009;61:689-705.
 87. Andrews S, Lee JW, Choi SO, Prausnitz MR. Transdermal insulin delivery using microdermabrasion. *Pharm Res* 2011;28:2110-8.
 88. Charoo NA, Rahman Z, Repka MA, Murthy SN. Electroporation: An avenue for transdermal drug delivery. *Curr Drug Deliv* 2010;7:125-36.
 89. Malakar J, Sen SO, Nayak AK, Sen KK. Formulation, optimization and evaluation of transferosomal gel for transdermal insulin delivery. *Saudi Pharm J* 2012;20:355-63.
 90. Freckmann G, Pleus S, Haug C, Bitton G, Nagar R. Increasing local blood flow by warming the application site: Beneficial effects on postprandial glycemic excursions. *J Diabetes Sci Technol* 2012;6:780-5.
 91. Freckmann G, Pleus S, Westhoff A, Krinelke LG, Buhr A, Jendrike N, *et al.* Clinical performance of a device that applies local heat to the insulin infusion site: A crossover study. *J Diabetes Sci Technol* 2012;6:320-7.
 92. Vaughn DE, Muchmore DB. Use of recombinant human hyaluronidase to accelerate rapid insulin analogue absorption: Experience with subcutaneous injection and continuous infusion. *Endocr Pract* 2011;17:914-21.
 93. Bariya SH, Gohel MC, Mehta TA, Sharma OP. Microneedles: An emerging transdermal drug delivery system. *J Pharm Pharmacol* 2012;64:11-29.
 94. Botz CK, Leibel BS, Zingg W, Gander RE, Albisser AM. Comparison of peripheral and portal routes of insulin infusion by a computer-controlled insulin infusion system (artificial endocrine pancreas). *Diabetes* 1976;25:691-700.
 95. Van Dijk P. Intraperitoneal insulin. *Diapedia the Living Textbook of Diabetes*. 2013. Available from: <http://www.diapedia.org/type-1-diabetes-mellitus/2104588419/intraperitoneal-insulin>. [Last accessed on 2013 Nov 12].
 96. Renard E. Insulin delivery route for the artificial pancreas: Subcutaneous, intraperitoneal, or intravenous? Pros and cons. *J Diabetes Sci Technol* 2008;2:735-8.
 97. Gin H, Renard E, Melki V, Boivin S, Schaepelynck-Bélicar P, Guerci B, *et al.* Combined improvements in implantable pump technology and insulin stability allow safe and effective long term intraperitoneal insulin delivery in type 1 diabetic patients: The EVADIAC experience. *Diabetes Metab* 2003;29:602-7.
 98. Kumareswaran K, Evans ML, Hovorka R. Closed-loop insulin delivery: Towards improved diabetes care. *Discov Med* 2012;13:159-70.
 99. Morgan RV. Delivery of systemic regular insulin via the ocular route in cats. *J Ocul Pharmacol Ther* 1995;11:565-73.
 100. Ritschel WA, Ritschel GB, Ritschel BE, Lucker PW. Rectal delivery system for insulin. *Methods Find Exp Clin Pharmacol* 1988;10:645-56.
 101. Yamasaki Y, Shichiri M, Kawamori R, Kikuchi M, Yagi T, Ara S, *et al.* The effectiveness of rectal administration of insulin suppository on normal and diabetic subjects. *Diabetes Care* 1981;4:454-8.
 102. Laqueur E, Grevenstuck A. Über die wirkung intratrachealer zuführung von insulin. *Klin Wochenschr* 1924;3:1273-4.

How to cite this article: Shah RB, Patel M, Maahs DM, Shah VN. Insulin delivery methods: Past, present and future. *Int J Pharma Investig* 2016;6:1-9.

Source of Support: Nil. **Conflict of Interest:** None declared.